



**Murrumbidgee**  
**COUNCIL**

**DISABILITY INCLUSION ACTION PLAN**

**2017-2021**

Murrumbidgee Council would like to begin by acknowledging the Traditional Owners of the land. We would also like to pay our respects to Elders past and present.

## CONTENTS

Statement of Commitment.....	4
About this Plan .....	5
National and Legislative Context.....	6
Related Legislation and Standards.....	6
International .....	6
Commonwealth .....	6
State - NSW .....	7
NSW Disability Inclusion Act 2014 .....	8
Murrumbidgee Council – Disability Inclusion Action Plan.....	9
Council’s Community Planning and Development Roles and Responsibilities.....	10
Community Consultation and Emerging Key Issues in Coleambally .....	11
Community Consultation and Emerging Key Issues in Darlington Point .....	14
Community Consultation and Emerging Key Issues in Jerilderie .....	16
Infrastructure Issues - Coleambally .....	19
Infrastructure Issues – Darlington Point.....	21
Infrastructure Issues - Jerilderie .....	22
Monitoring and Evaluation.....	23

## Statement of Commitment

Murrumbidgee Council affirms its commitment to:

- Advocating equal rights for all and improving our towns as accessible and inclusive places.
- Strive for an inclusive community through collaboration with community, business and government groups.
- Improve awareness of and access to Council facilities for improved community wellbeing.

## About this Plan

Murrumbidgee Council's Disability Inclusion Action Plan is a four year framework outlining the key strategies and action areas to be delivered by Council in its commitment to disability access and inclusion within the Murrumbidgee local government area. This plan is prepared under a hierarchy of legislation: Commonwealth and State as well as the Murrumbidgee Council Strategic Planning framework.

The plan is Council's way of defining how the organisation will make targeted and continual effort to reduce the barriers that people face when living, working and visiting the Murrumbidgee local government area.

Diversity within our community is acknowledged, our community reflects different cultural groups and acknowledging diversity and individuality in ability is an important part of committing to the principles of access and inclusion. It is recognised that peoples experience living with disability is not easily categorised and sometimes not easily seen.

## National and Legislative Context

There is a range of Commonwealth and State legislation that actively supports access and inclusion for people with disability. These are the policy settings that require Murrumbidgee Council to undertake its business operations in certain ways with regard to access and inclusion.

Under the Commonwealth Disability Discrimination Act 1992, discrimination on the basis of disability is unlawful. Council has an obligation to make its facilities and services accessible.

In 2008, the Australian Government committed to implementing the United Nations (UN) Convention of the Rights of Persons with Disabilities:

*“to promote, protect and ensure the full and equal enjoyment of all human rights and fundamental freedoms by all persons with disabilities, and to promote respect for their inherent dignity”.*

The Commonwealth *National Disability Strategy (NDS) 2010-2020* sets out a 10 year national plan for improving life for all Australians with disability, their families and carers. The NDS is underpinned by the UN human rights approach. This approach also supports the NSW Government enactment of the *NSW Disability Inclusion Act (DIA) 2014*.

## Related Legislation and Standards

### International

United Nations Convention on the Rights of Persons with Disabilities

### Commonwealth

*Disability Discrimination Act 1992*

National Disability Strategy 2010 – 2020

National Art and Disability Strategy (2009)

*Disability (Access to Premises Standards – Buildings) Standards 2010*

**State - NSW**

*NSW Disability Inclusion Act (DIA) 2014*

*Carers (Recognition) Act 2010 (NSW)*

*NSW Anti-Discrimination Act 1977 (ADA)*

*Disability Standards for Accessible Public Transport 2002*

*National Disability Strategy – NSW Implementation Plan 2012 – 2014*

*Local Government Act 1993 and Local Government (General) Regulation 2005*

The diagram below shows the Commonwealth and State legislation that informs the development of local government disability access and inclusion planning.

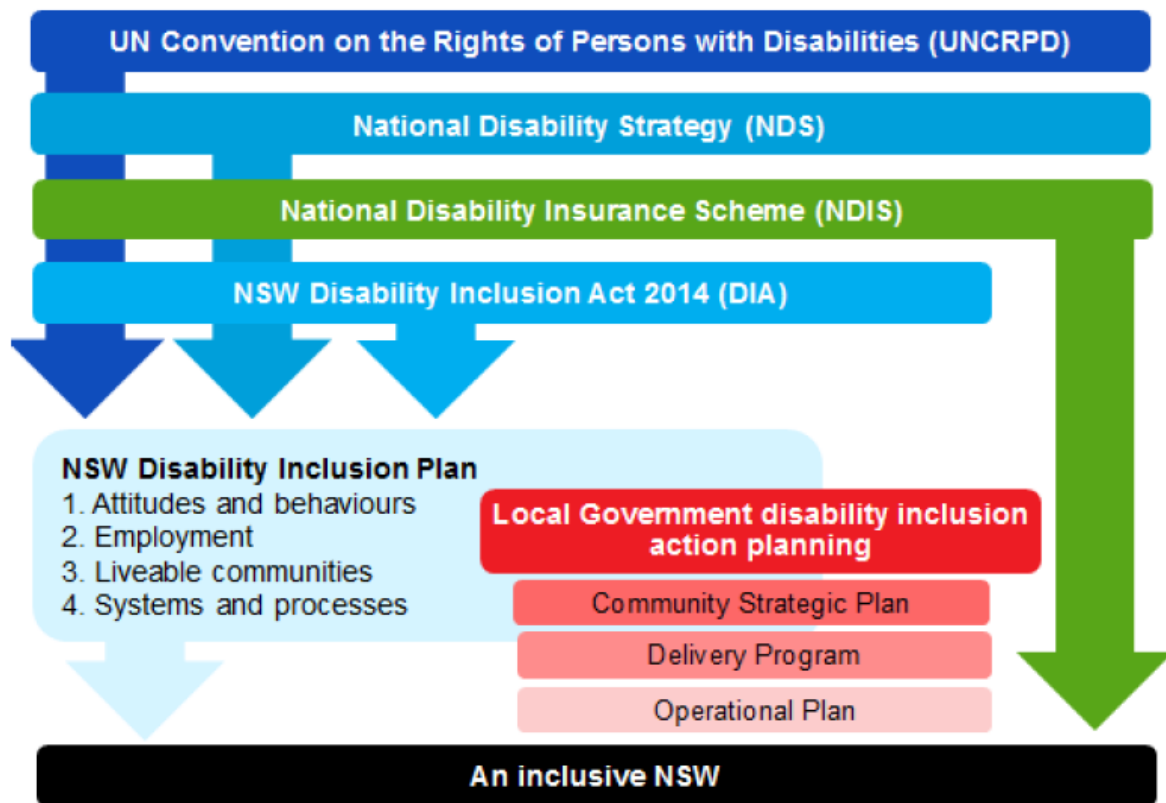


Image source: Local Government NSW and NSW Family and Community Service - Disability Inclusion Action Plan guidelines

## NSW Disability Inclusion Act 2014

The NSW Disability Inclusion Act 2014 includes a series of principles which relate to people with disability and recognise the needs of particular groups. S.12 (3) of the NSW Disability Inclusion Act 2014 requires each public authority to prepare a Disability Action Plan. Section 12 (3) requires Councils to prepare a Disability Inclusion Action plan which must include:

- how the Council regards disability principles;
- strategies for providing access to public buildings, events and facilities;
- details about how to access information;
- how employment opportunities for people with a disability are to be supported;
- demonstrate opportunities for people with disability to access the full range of services and activities available in the community, and
- include details of consultation about the plan with people with disability, and
- explain how the plan supports the goals of the State Disability Inclusion Plan.

As a result, this plan sets out a series of principles, strategies and actions that will guide Council operations over the next four years. These align with the principles of the Disability Inclusion Act 2014, as well as the NSW Government's Disability Inclusion Plan which specifies four focus areas.

The four focus areas "are aimed at creating long term change and require consistent efforts from government and the wider community".

These are:

1. Developing positive community attitudes and behaviours
2. Creating liveable communities
3. Supporting access to meaningful employment
4. Improving access to mainstream services through better systems and processes



## Murrumbidgee Council – Disability Inclusion Action Plan

From the legislative framework, Murrumbidgee Council has developed its overarching Statement of Commitment which is included at the front of the plan. At the back of the plan under each focus area is a guiding principle and a series of strategies and actions which are the vital component to strengthening the Communities within the Council area as an accessible and inclusive Local Government Area.

The diagram below shows how the Disability Inclusion Action Plan fits into the integrated planning and reporting framework of local government.

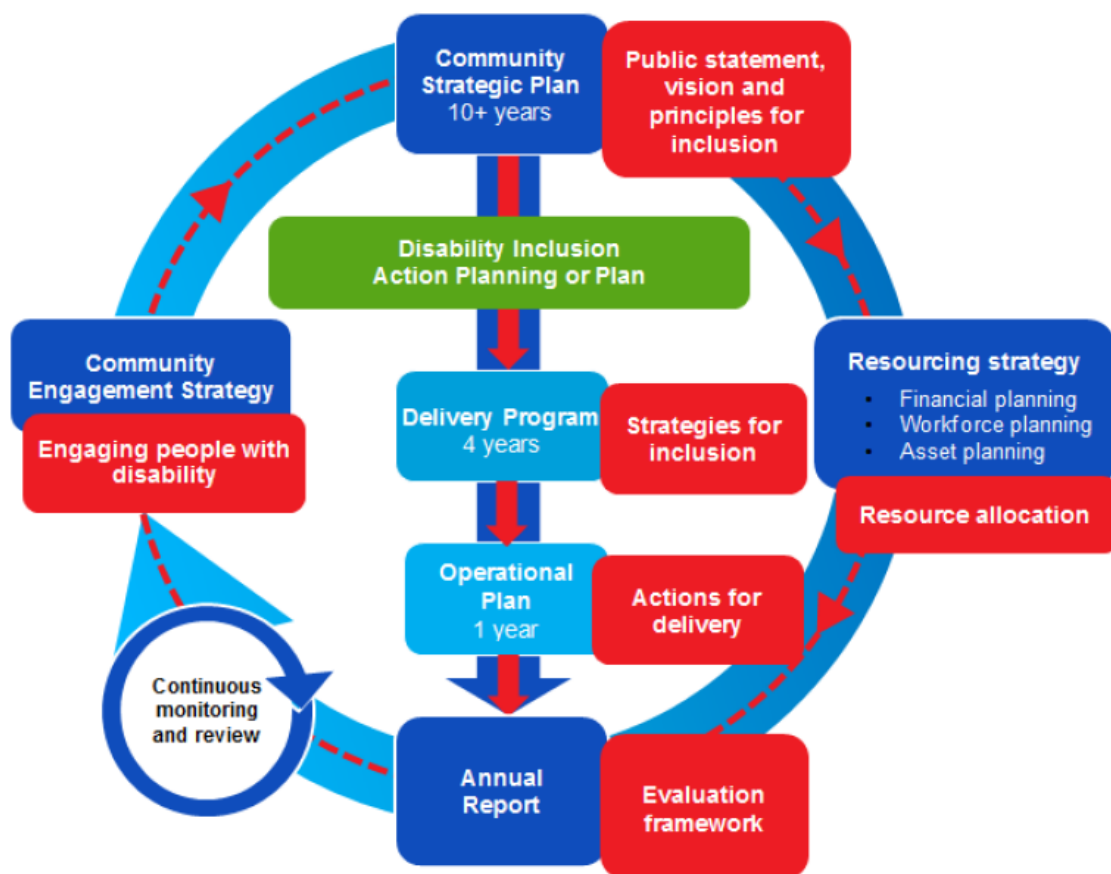


Image source: Local Government NSW and NSW Family and Community Service - Disability Inclusion Action Plan guidelines

## **Council's Community Planning and Development Roles and Responsibilities**

- planning for and upgrading facilities and centres for a growing, ageing and diversifying resident population
- planning and leading for changes in technology and employment
- maintaining 3 sports fields, 2 community sports centres, 7 community halls, 1 library and 1 mobile library and 3 swimming pool complexes.
- collaborating to keep the community safe, healthy and resilient
- building capacity within the community to keep people socially connected and able to get out and about
- providing leadership and giving people the opportunity to participate in community consultations
- responding to customer enquiries

## Community Consultation and Emerging Key Issues in Coleambally

Community Surveys were distributed to all residents of Murrumbidgee Council with the October Newsletter.

8 Surveys were received from Coleambally residents.

Priorities identified by the survey respondents were community buildings and facilities, information and communication and sporting and recreation facilities.

Areas identified as “not easy to use” were footpaths, kerb ramps, street crossings, signs, public toilets, seating, sporting grounds and facilities, shopping areas, mobility parking. The comments linked to these issues were:

### Footpaths

- More footpaths
- Footpath joints not level
- Need concrete paths in all streets otherwise may have to use middle of road
- Walking tracks / footpaths improved
- Not all complete around town

### Kerb Ramps

- Not all ramps accessible

### Street Crossings

- Zebra crossings
- Kingfisher to Brolga Place hard in any wheelchair

### Signs

- Signs pointing out kerb ramps
- Sign at ramp at Brolga Hotel
- More and clearer

### Public Toilets

- Need to be cleaned properly and regularly
- Improved facilities
- Those in McInnes Square doors do not go outwards

### Seating

- Requested a bench seat be repaired 2 years ago in Coly, still nothing done.
- Tables too high
- At parks and sporting facilities
- Not enough

### Shopping Areas

- Need better ramps into shops
- Wheelchair access to all shops
- Need ramps to all shops at correct ratio

### Mobility Parking

- Not enough – need one in middle section of parking area
- Painted signs on road are faded
- Lined and signed

### Sporting Grounds / Facilities

- Speed humps could throw a person out of a wheelchair; sandy and uneven surfaces
- Need hoist at pool
- Better and permanent access to swimming pool in Coleambally
- No good spot to unload people in wheelchairs – very sandy and boggy

### Mobile Library (Coleambally)

#### Comments:

- Great difficulty to get a wheelchair into the mobile library
- Permanent library located at each location, with access to service information, including youth and community hub
- Have a ramp for the mobile library
- Not wheelchair accessible
- Do not know as the library van is difficult for anybody with a disability
- Don't know but are they accessible to wheelchair users and they frail aged who can't manage stairs?

### Public Halls

#### Comments:

- Transport if they don't drive, uneven surface to roll / step over, doors can fling open or slam shut whilst trying to open or be too heavy.
- Needs path from parking area to veranda
- Too much sand leading up to Coleambally Stadium.
- Coleambally Youth and Sports Centre – someone in a wheelchair would have trouble with the childproof gate and access to toilet.
- No footpath to Coly Stadium or Coly Community Hall

### Public Pool - Coleambally

- Hoist needed
- Ensure safely accessible ramps are available to all pools including infant pools.
- Ramp step at kiosk to go to pool area
- Need to build permanent easy access to Coly pool with rails eg: 1. Side ramp with rails on side next to kids pool 2. Steps with rail.

### Council Office – Coleambally

- Door cannot be opened by aged or wheelchair users

### **Information - Council Publications / Newsletters – Website – Social Media**

- Information difficult to find
- Information too hard to find (website)
- For anyone with a learning disability most would be unable to read or comprehend any of the above. Pictures need to be included. Many aged would not access the web or social media.

## Community Consultation and Emerging Key Issues in Darlington Point

Community Surveys were distributed to all residents of Murrumbidgee Council with the October Newsletter.

5 Surveys were received from Darlington Point residents.

One respondent identified all facilities listed as of equal importance and priority.

- Community buildings and public facilities
- Parks and open spaces
- Information and communication
- Services and programs
- Sporting and recreation facilities

Areas identified as “not easy to use” were footpaths, kerb ramps, street crossings, public toilets, shopping areas, mobility parking and sporting grounds / facilities. The comments linked to these issues were:

### Footpaths

- Replaced paved areas
- Do not like pavers, uneven

### Kerb Ramps

- Provide more in more appropriate places.

### Street Crossings

- Provide a zebra crossing in an appropriate area.

### Public Toilets

- Improve existing facilities

### Shopping Areas

- Some shops do not have easy access – change entries to ramps where able.

### Mobility Parking

- None in shopping area
- Increase parking areas

### Sporting grounds / facilities

- Very difficult to access sports grounds and parks. There is no concrete pathway for easy access to canteen / clubhouse.
- A liberty swing in the park for those in wheelchairs and proper pathways.

### Libraries

Mobile Library – not easy to use

- The library is easy to get to but not appropriate for people in wheel chairs.

**Public Halls**

CWA Hall Darlington Point – rails need to be put on the steps going out to the front veranda

**Public Pools – Darlington Point – not easy to access**

- There is facility for a person in a wheel chair to enter or exit the pools, or a water friendly chair to use. Purchasing a specific wheel chair for use and building a ramp – removable or permanent – for access to the pools. Also adding railings in the pools would be beneficial.

**Council Office – Darlington Point – not easy to access**

- Entering the Council office is difficult for wheel chair bound people, less mobile people or people caring for someone with a disability. Changing this door to an automatic door would be helpful

## Community Consultation and Emerging Key Issues in Jerilderie

Community Surveys were distributed to all residents of Murrumbidgee Council with the October Newsletter.

13 Surveys were received from Jerilderie residents.

Priorities identified by the survey respondents were community buildings and facilities, information and communication and sporting and recreation facilities.

Areas identified as “not easy to use” were footpaths, kerb ramps, street crossings, seating, sporting grounds and facilities, shopping areas, mobility parking. The comments linked to these issues were:

Footpaths – the footpaths in the CBD are good, need to extend the footpath system to include more “back streets” and allow the elderly population more access on footpaths for mobility scooters.

- Need to prioritise footpath construction.

Kerb ramps – some kerb ramps need work

Street crossings – need more line markings to slow down traffic

- Suggest a crossing in front of the bakery
- There is only one legal crossing
- The pedestrian crossing is confusing – is it only a school crossing? It is remote from the shops.
- Rough edges on the roads particularly leading into the shopping precinct.

Seating – more seats needed around the newsagent and in the park adjacent to public toilets, also suggest tables in the park.

- Extra seating is needed
- Seating adjacent to Caltex for the bus stop

Shopping Areas – visibility around the safety fencing is difficult on leaving the parking area.

- Shop owners at businesses on the southern side of the street are very helpful but access is difficult because of the step up into the shops.
- Ramps are needed into older shops where there are steps.

Sporting Grounds / Facilities

- Need more access to creek and lake
- Large elderly community with issues such as arthritis, indoor heated deep water therapy pool would be very welcome. Barooga pool closest facility.
- Monash Park adequate access.
- Racecourse access needs improving.
- Accessible pathway in Luke Park suggested.



### Library Access

- although the majority of the survey respondents replied that the Library was easy to use the following comment was received regarding access for wheelchairs.
- the rise and threshold of the entry door is not flush and is difficult for wheelchairs to access.
- Update the entry to remove the step over for wheelchair access

Comment on use of library – good access, few encumbrances, open areas for ease of movement, access to disabled toilet, light and well insulated to minimise noise interference, has appropriate seating, flooring is safe for people with vision issues and allows good movement for walking aids and wheelchairs.

Civic Hall – 12 respondents recorded the Civic Hall as being easy to use.

### Swimming Pool Complex - Jerilderie

Two of the respondents answered no to the swimming pool being easy to use.

- The door into the entrance needs to be changed to make entering easier for disabled.
- Footpath access to pool precinct is not good, how do you cross the road safely from new footpath to the pool.

Council Office – 11 respondents answered yes to the Council Office being easy to use.

### Information - Council Publications / Newsletters – Website – Social Media

- Council Staff are very obliging in helping those who ask for help
- The information is easily accessible, it's whether or not there is support or advocacy if it is required.

## **Information about the residents who completed the survey (Coleambally, Darlington Point and Jerilderie)**

Person with a disability - 5  
Family member or close friend of a person with a disability – 12  
Employed in the disability sector - 2  
Supporter or carer of a person with a disability – 4

Age range  
26-55 – 5  
56-65 - 7  
Over 65 – 8

No groups selected by any of the residents who completed surveys

Disability types selected (some respondents chose more than one)  
None - 4  
Disability that affects mobility - 8  
Cognitive disability – 3  
Vision related disability - 3  
Disability or difficulty affecting learning – 3  
Hearing related disability – 8  
Mental health disability - 3  
Progressive disability – 2  
Other – 7

As a result of the surveys received Council has produced the following table to highlight the issues and the method of resolving the issues:

## Infrastructure Issues - Coleambally

Location	Issue	Method of Resolving Issue	Delivery Timeframe
Footpaths	More footpaths needed for safe access		
	Joints not level	Inspection and	
Kerb Ramps	Not all kerb ramps accessible to wheelchairs / mobility scooters	PAMPS Program / Inspections	
Street Crossing	Zebra crossings needed		
	Crossing Kingfisher to Brolga Place difficult in a wheelchair		
Signs	Need to update signs?		
Public Toilets	Doors should open outwards	Inspection and renovation McInnes Square toilets	
Seating	Not enough seating	Brolga Place Upgrade	
	Tables too high	Brolga Place Upgrade	
Shopping Area	Update ramps into shops	Brolga Place Upgrade	
	Wheelchair access to all shops	Brolga Place Upgrade	
Mobility Parking	Not enough available	Brolga Place Upgrade	
	Painted markings on road need to be renewed	Brolga Place Upgrade	
	Signs need to be installed	Brolga Place Upgrade	
Sporting Grounds / Facilities	Speed humps are a hazard to mobility scooters / wheelchairs	Master Plan for Sports Precinct	
	Need a hoist at the pool	Exists & in place	
	Improved, permanent access to swimming pool		
	No good access for those in wheelchairs – very sandy / boggy	Concourse upgraded 2015	
Mobile Library	No access for those in wheelchairs or those who have difficulty with stairs		
Coleambally Community Hall	Access from car park to ramp difficult – sandy surface		
	No footpath access		
Coleambally Youth and Sports Centre	Wheelchair access difficult through	Master Plan Sports Precinct	

	childproof gate and toilets		
Coleambally Stadium	No footpath access	Master Plan Sports Precinct	

### *Infrastructure Issues – Darlington Point*

Location	Issue	Method of Resolving Issue	Delivery Timeframe
Footpaths	Replace paved areas with concrete footpaths	Existing MSC PAMP document identifies a hierarchy of footpaths in Darlington Point to be upgraded / replaced. Works to be programmed as funding allows.	
Kerb Ramps	More kerb ramps needed	Existing MSC PAMP document identifies a hierarchy of footpaths in Darlington Point to be upgraded / replaced. Works to be programmed as funding allows.	
Street Crossing	Suggestion to install a zebra crossing	RMS guidelines to be investigated	
Public Toilets	Improve existing facilities		
Shopping Areas	Some shops need upgraded access	Negotiate with shop owners.	
Mobility Parking	No mobility parking in shopping area		
Sporting Grounds	No concrete pathway for access to sport ground facilities		
CWA Hall	Need rails on steps going out to front veranda		

## Infrastructure Issues - Jerilderie

Location	Issue	Method of Resolving Issue	Delivery Timeframe
Footpaths	Extension of footpath system to allow access by those using wheelchairs and mobility scooters	Existing Cycleways / Walkways program.	
Kerb Ramps		Existing PAMP and inspection program	
Street Crossings			
Seating	More seating needed around newsagent and in park adjacent to public toilets		
	Suggests seating at Caltex Service Station bus stop		
Shopping Area	Visibility around safety fencing difficult on leaving the parking area in front of supermarket		
	Ramps are needed into older shops where there are steps	Negotiate with shop owners	
Mobility Parking	Marked parking spots do not allow room for passengers to access mobility aides – kerb ramps needed adjacent to marked parking spots.	Meet AS1428 and parking requirements	
Sporting Grounds / Facilities	Need more access to the creek and lake area.	Stronger Communities Funding to Jerilderie Tidy Towns	
	Access pathway through Luke Park	Stronger Communities Funding to Jerilderie Tidy Towns	
	Racecourse access needs to be improved.	Stronger Communities Funding – Jerilderie Race Club	
	Improvements to Swimming Pool -	Part of refurbishment plans	
Library	Rise and threshold of the entry door not flush.	Improve access for wheelchairs by renovating the entry to the library	

## **Monitoring and Evaluation**

Each year, Council will report on its progress against the Disability Inclusion Action Plan as part of its Annual Report. A summary of achievements will also be prepared annually and provided to the NSW Disability Council.